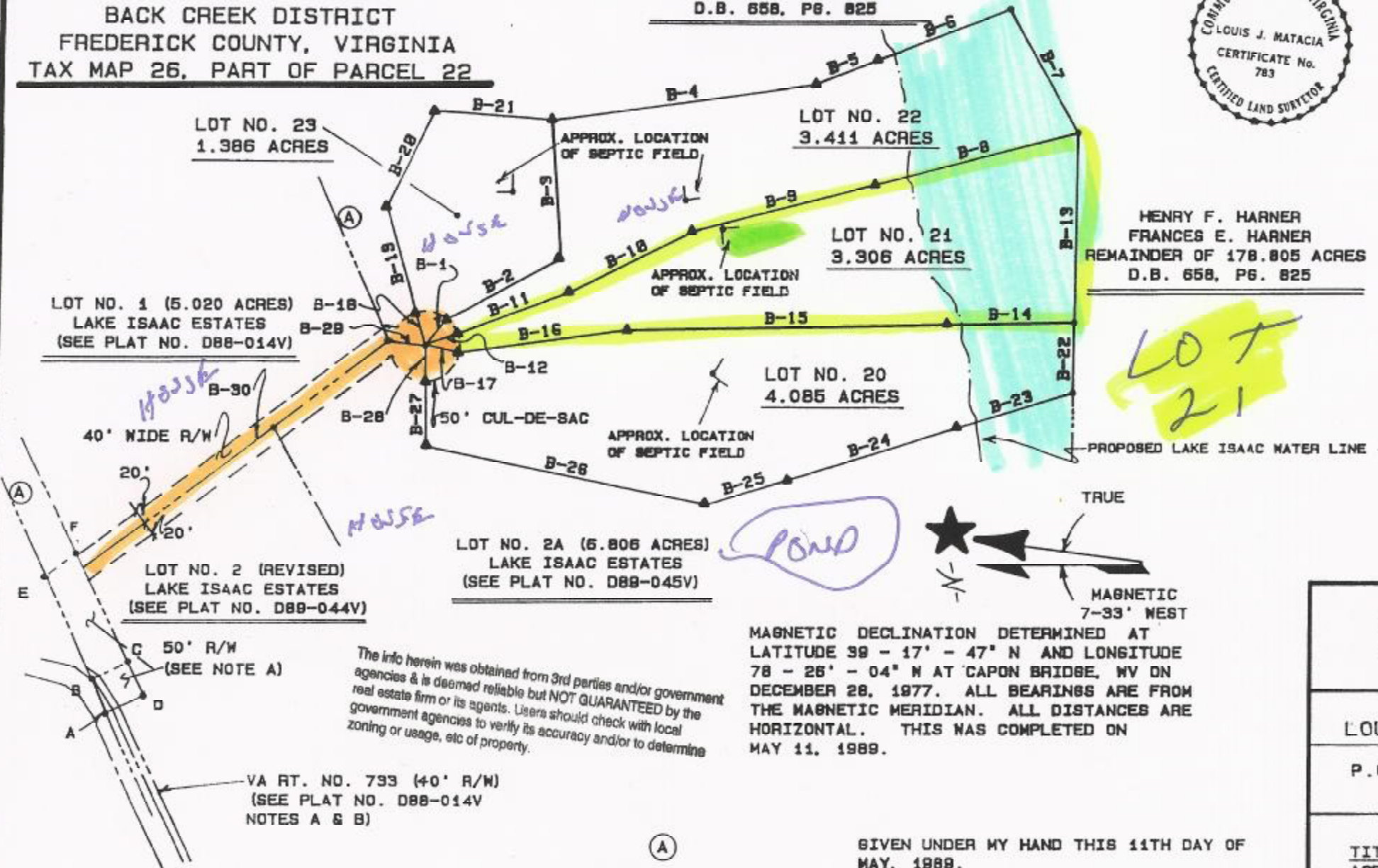


**SURVEY OF LOT NOS. 20 THRU 23
LAKE ISAAC ESTATES-SECTION II
12.188 TOTAL ACRES
BACK CREEK DISTRICT
FREDERICK COUNTY, VIRGINIA
TAX MAP 26, PART OF PARCEL 22**

HENRY F. HARNER
FRANCES E. HARNER
REMAINDER OF 178.805 ACRES
D.B. 658, PG. 825



HENRY F. HARNER
FRANCES E. HARNER
REMAINDER OF 178.805 ACRES
D.B. 658, PG. 825



The info herein was obtained from 3rd parties and/or government agencies & is deemed reliable but NOT GUARANTEED by the real estate firm or its agents. Users should check with local government agencies to verify its accuracy and/or to determine zoning or usage, etc of property.

MAGNETIC DECLINATION DETERMINED AT
LATITUDE 39 - 17' - 47" N AND LONGITUDE
78 - 26' - 04" W AT CAPON BRIDGE, WV ON
DECEMBER 28, 1977. ALL BEARINGS ARE FROM
THE MAGNETIC MERIDIAN. ALL DISTANCES ARE
HORIZONTAL. THIS WAS COMPLETED ON
MAY 11, 1989.

VA RT. NO. 793 (40' R/W)
(SEE PLAT NO. D88-014V
NOTES A & B)

GIVEN UNDER MY HAND THIS 11TH DAY OF
MAY, 1989.

HENRY F. HARNER
FRANCES E. HARNER
REMAINDER OF 178.805 ACRES
D.B. 658, PG. 825

Louis J. Matocia
LOUIS J. MATOCIA, SURVEYOR

LOU
P.O
TITLE ACRE HARN D.B.